



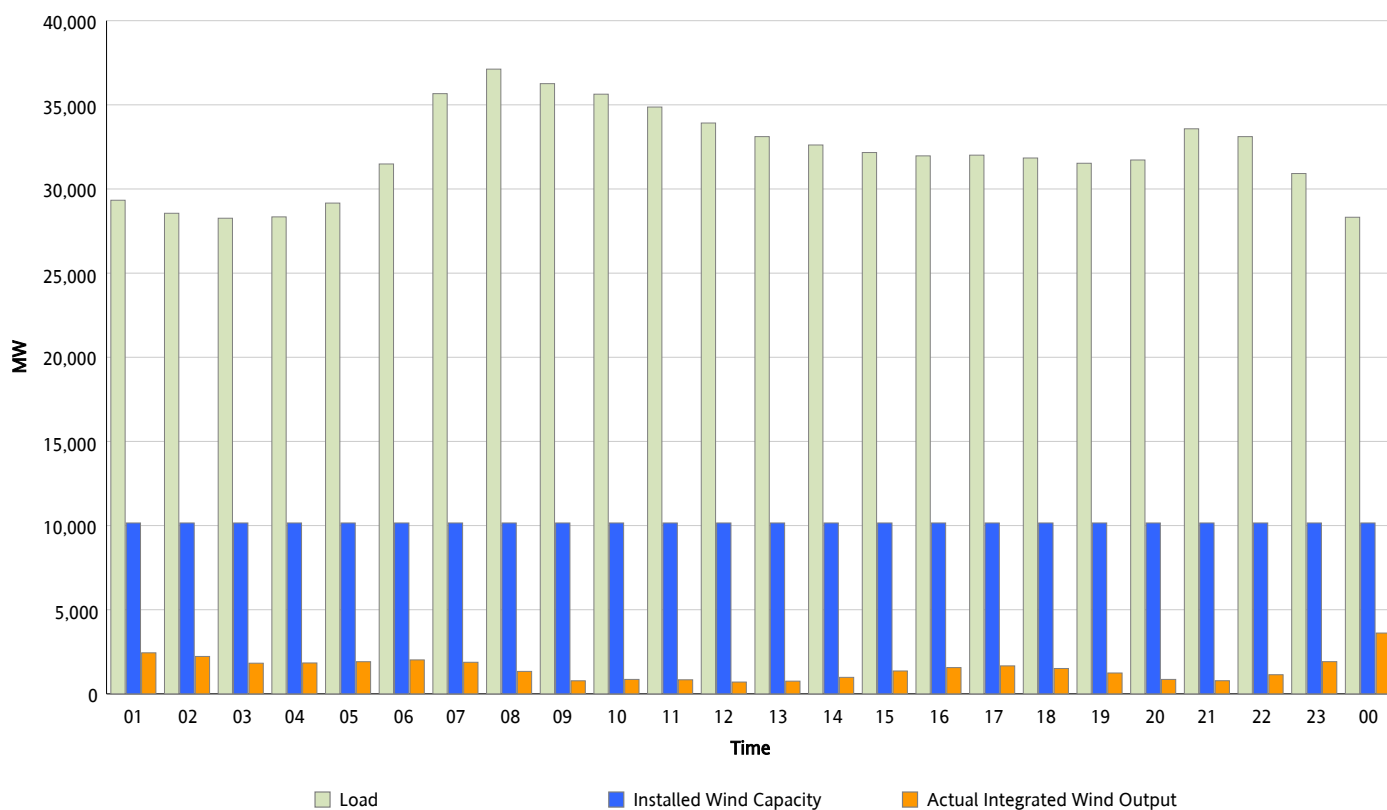
ERCOT Grid Operations

Wind Integration Report : 04/11/2013

Peak Load	37,120 MW
Load Peak Hour (HE)	08
Wind Over Peak	1,335 MW
Wind Record 02/09/13	9,481 MW
Max Wind Value*	4,379 MW
Wind Peak Time	23:59
Wind Integration %	15.97 %

Hourly Average Actual Load vs. Actual Wind Output

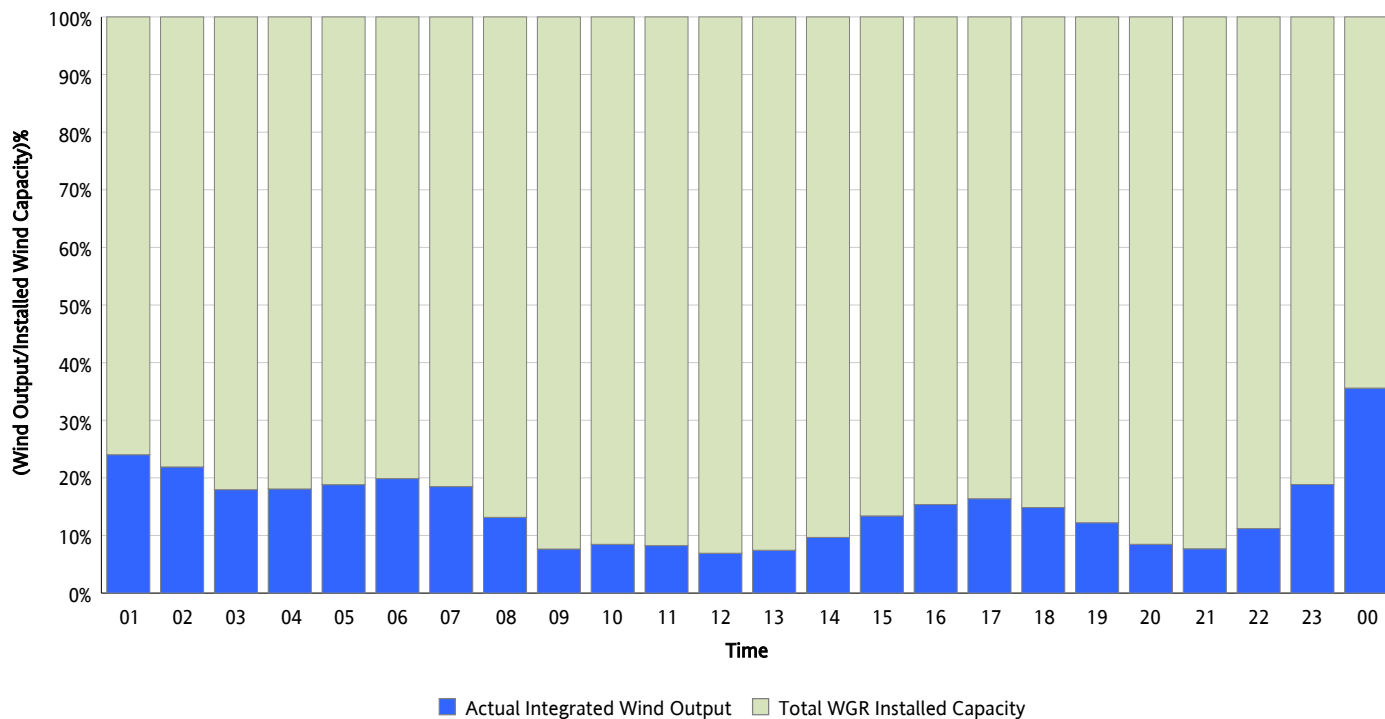
04/11/2013



* Wind Record and Wind Max represent instantaneous values and the rest of the values are integrated over the hour

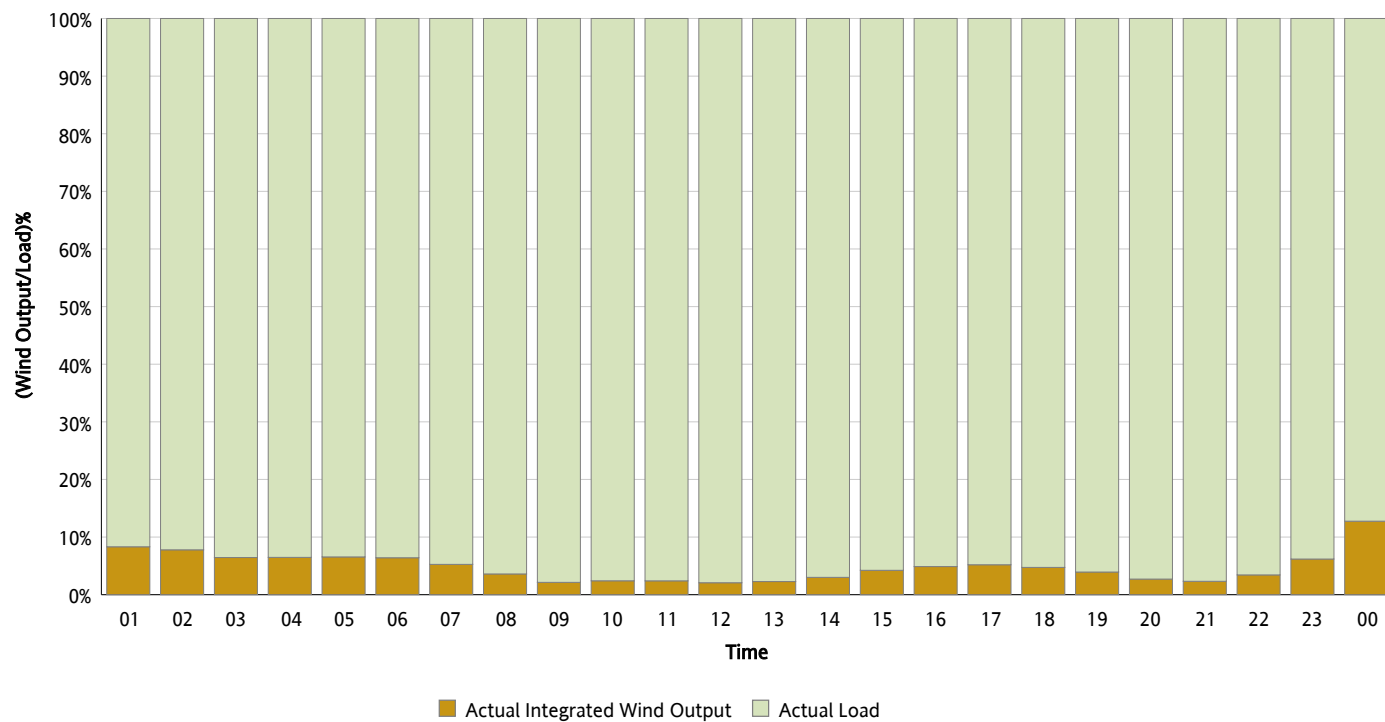
Actual Wind Output as a Percentage of the Total Installed Wind Capacity

04/11/2013



Actual Wind Output as a Percentage of the ERCOT Load

04/11/2013



ERCOT Load vs. Actual Wind Output

04/04/2013 - 04/11/2013

